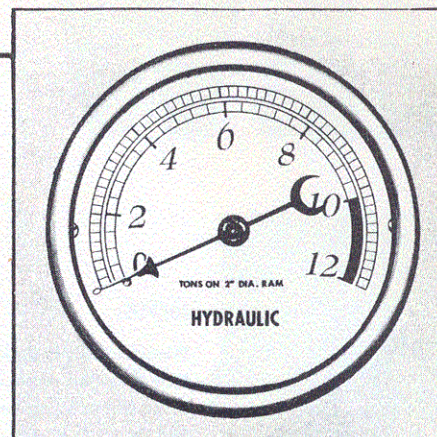


Specifications

MODEL NUMBER	137-BH-1
CAPACITY	10
STROKE	6-3/4"
THROAT DEPTH	8-1/2"
DAYLIGHT (Maximum)	12"
NUMBER OF PUMP SPEEDS	One
BETWEEN BASE MEMBERS	6-3/4"
TABLE PLATE	4-1/2" x 12" x 1-1/4"
TABLE PLATE "U" SLOT	1-1/4" x 1-5/8"
V BLOCKS	3" x 3" x 1"
HEIGHT OVERALL	36-1/4"
WIDTH OVERALL (L-R)	12"
DEPTH OVERALL (F-B)	22-1/4"
GAUGE DIAMETER	3-1/2"
RAM EXTENSION	1-1/2" x 3-7/8"
SHIPPING WEIGHT OF PRESS COMPLETE	205 Lbs.



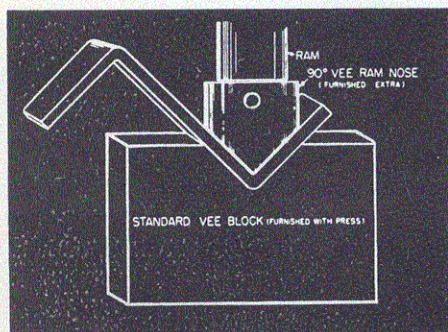
PRESSURE GAUGE
No. 137-EX-8
3 1/2" Dial 0-12 Tons

OPTIONAL EQUIPMENT

*All dimensions shown are in Inches. K. R. Wilson, Inc. reserves the right to make changes in design, specifications and to substitute materials without obligation.

OPTIONAL EQUIPMENT

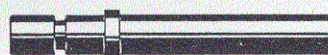
These accessories add to the versatility of the model 137-BH Bench Arbor Press. Parts are accurately machined and hardened to obtain maximum tool life.



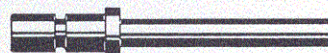
90° RAM NOSE

This Hardened Ram Nose can be quickly snapped on to the end of the ram to make a simple bending die.

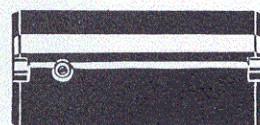
No. 137-RN



No. 137-EX-1 1/2" Insert



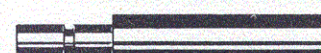
No. 137-EX-2 3/8" Insert



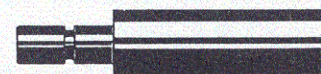
No. 137-EX-6



No. 137-EX-3 5/8" Insert



No. 137-EX-4 3/4" Insert



No. 137-EX-5 7/8" Insert

EXTENSION INSERTS

Complete set of inserts include 3/8", 1/2", 5/8", 3/4", and 7/8" sizes. The insert adapter, which is included with the set, attaches to end of ram.

No. 137-EX Set Complete

Distributed By

K. R. WILSON, Inc. ARCADE, NEW YORK

Manufacturers of Hydraulic Presses, Pumping Units, Cylinders, Valves and Hand Pumps